

PLANT SUPERVISOR

Sample Pages



2020

Società Automazione Industriale

Operator Panel

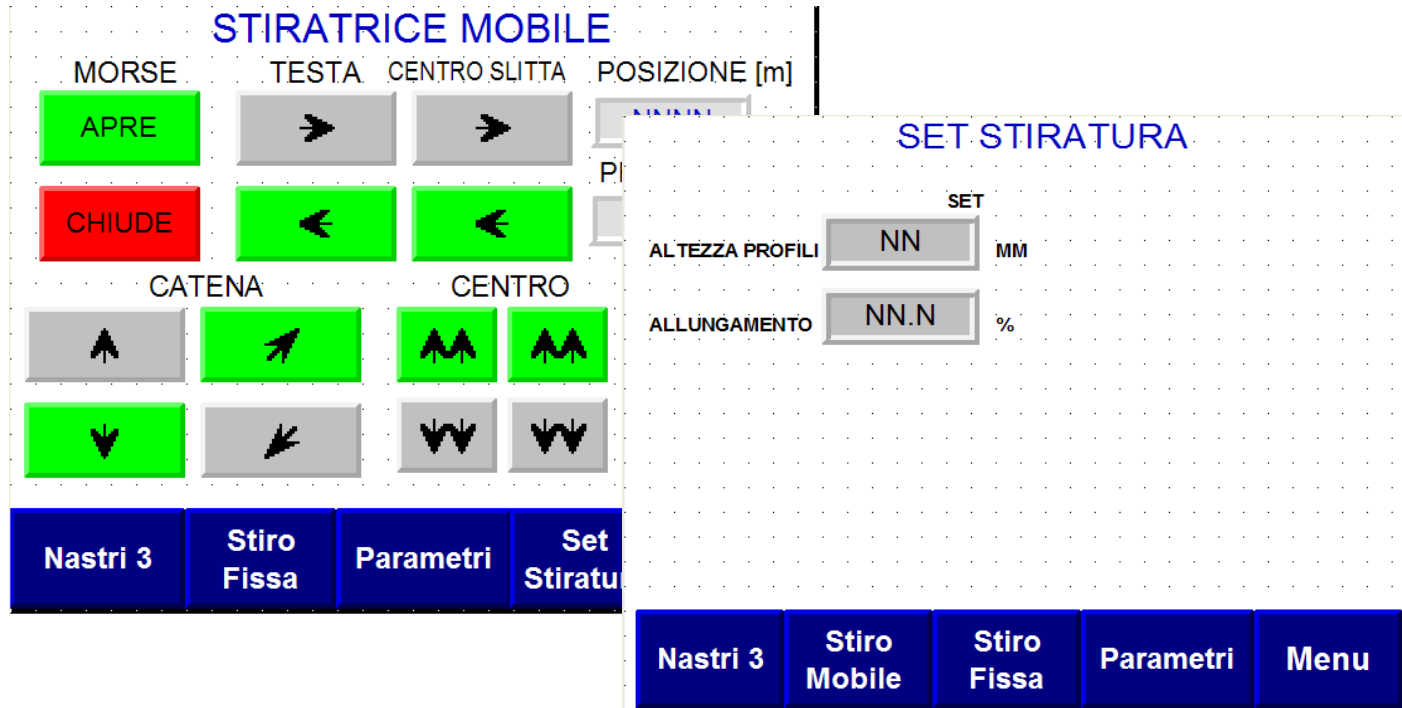
S. A. I. Automation		MENU	
Anzeigen		Istwert	
Position Puller	cm	1234	
Puller Geschwindigkeit	m/min	1234	
Ziehkraft Puller	%	1234	
Ausziehlänge	cm	1234	
Position Säge			
Säge Geschwindigkeit			
Ziehkraft Säge			
Schritt (Nummer)			

S. A. I. Automation		MENU	
Profil abgelegt		0	
Presse in Extrusion		0	
Extrusionsende erreicht		0	
Extrusionsende bald erreicht		0	
IF4 Freigabe Extrusion		0	
IF5 Ausfahr länge erreicht		0	
IF6 Max Ausfahr länge erreicht		0	
IF7 Freigabe Profil ablegen		0	

S. A. I. Automation		MENU	
Produktions Parameter		ISTWERT	
Extrudierte Stangen		1234	Stk.
Extrudierte Blöcke		1234	Stk.
Blocklänge		1234	mm
Exit Profile		1234	cm
Gewicht einzelnes Profil		1234	g
Extrusions Geschwindigkeit		1234	m/min
Gewicht Extrudiert		1234	kg
Butt End		1234	mm
MEHR...		MENU	

Operator Panel

Stretcher



Parameters

RUN OUT TABLE S.A.L. srl **Parameters**

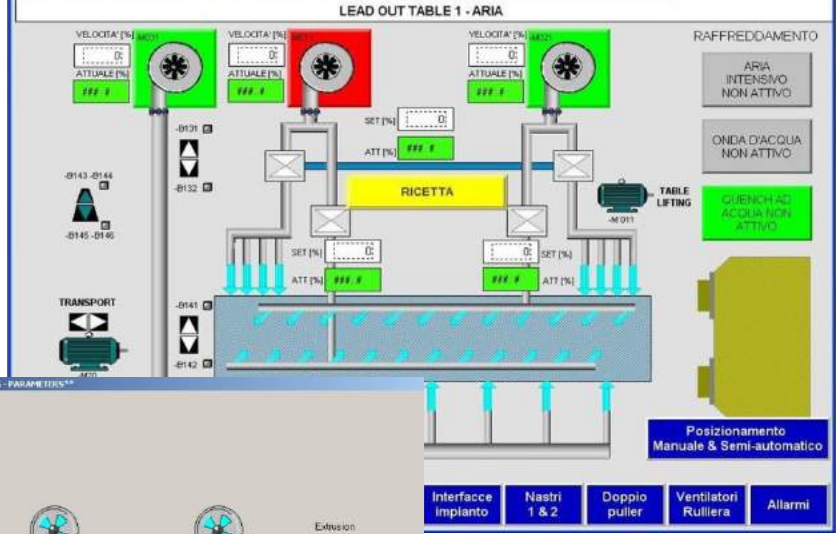
MENU BACK FURNACE ISOTHERMAL PRESS ALARMS

Saw Position: 0
 Puller 1 Position: 0
 Extrusion Speed: 0
 Puller 2 Position: 0

PARAMETERS	actual values	actual set
saw position	0	0 cm
profile length	0	0 cm
stretching	0	0

PARAMETERS	actual values	actual set
force puller 1	0	0 Kg
force puller 2	0	0 Kg
cycle puller		0
rear offset	0	0
speed of escape		0
corsa nastri 2		0

EXTRUSION
 BUTT END
 PROFILE



Interface Implantato Nastri 1 & 2 Doppio puller Ventilatori Rulliera Allarmi

ACTUAL VALUE	SET	ACTUAL VALUE	SET	ACTUAL VALUE	SET		
Saw position	Text1	Text1	cm	Force puller 1	Text1	Text1	kg
Profile length	Text1	Text1	cm	Force puller 2	Text1	Text1	kg
Stretching	Text1	Text1		Puller cycle	Text1		
				Queue offset	Text1	Text1	
				Escape speed	Text1		
				Belts A stroke	Text1	Text1	
				Belts B stroke	Text1	Text1	
				Belts C stroke	Text1	Text1	

MAIN MENU LIMIT SWITCHES TREND ALARMS

Diagnostic

FURNACE - SHEAR - HANDLING PERMISSIONS

CHECK PERMISSIONS

FURNACE - SHEAR	HANDLING
S15 Billet on loader permission	S17 Extrusion permission
S112 Call billet	S18
S113 Stop billet pusher	S19 F
S12 Trucks and Door stand-by command	S111
S11 Billet lubrication command	SPAF
S15 Press loader movement permission	SPAF
S13 Push billet into furnace permission	SPAF
S14 Temperature OK permission	SPAF
SPARE	
SPARE	
SPARE	
SPARE	

CLOSE

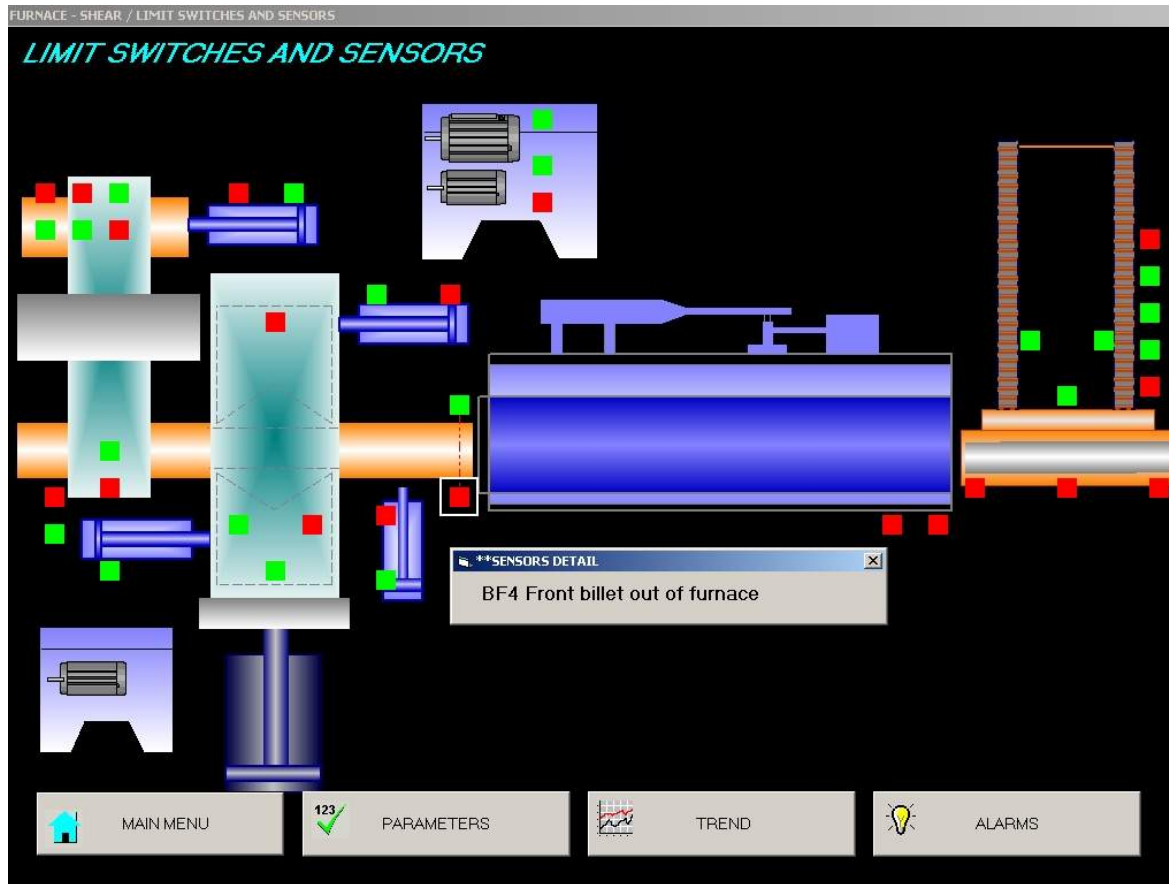
FURNACE - SHEAR / BREAKERS DIAGNOSTIC

FURNACE - SHEAR CIRCUIT BREAKERS DIAGNOSTIC

	QM1 SHEAR PUMP AUXILIARY
	QM2 SHEAR PUMP SHEARING
	QM3 TRASLATION PUMP

CLOSE

Safety



Cooling

SISTEMA RAFFREDDAMENTO NASTRI

The interface displays 10 fan groups arranged in two rows of five. Each group contains two fan icons with 'ON' and 'OFF' labels. A central arrow labeled 'DIREZIONE MATERIALE' points from right to left. A navigation bar at the bottom contains buttons for Home, Overview, Aria, Acqua, Sega traslante, Interfacce impianto, Nastri 1 & 2, Doppio puller, Ventilatori Rulliera, and Allarmi.

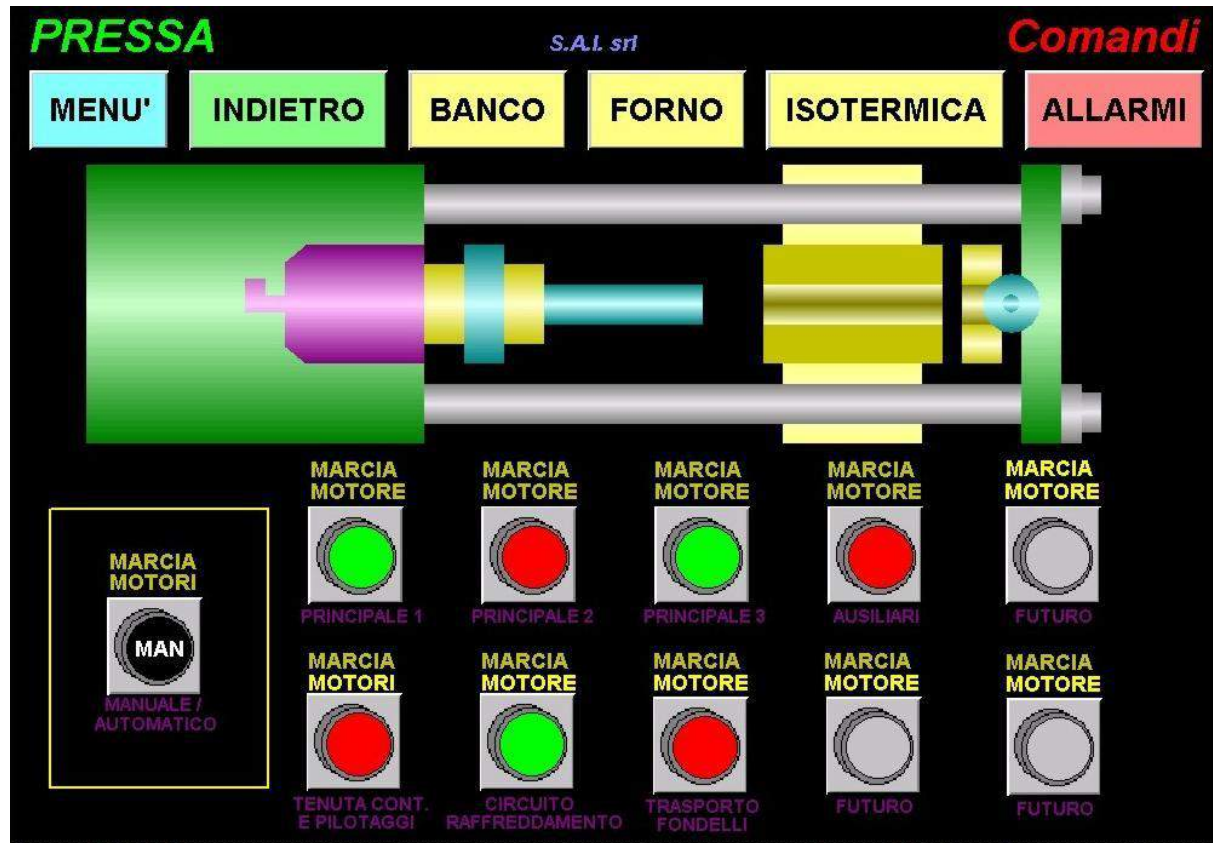
GRUPPO VENTOLE 5	GRUPPO VENTOLE 4	GRUPPO VENTOLE 3	GRUPPO VENTOLE 2	GRUPPO VENTOLE 1
OFF	OFF	OFF	OFF	OFF
ON	ON	ON	ON	ON
OFF	OFF	OFF	OFF	OFF

DIREZIONE MATERIALE

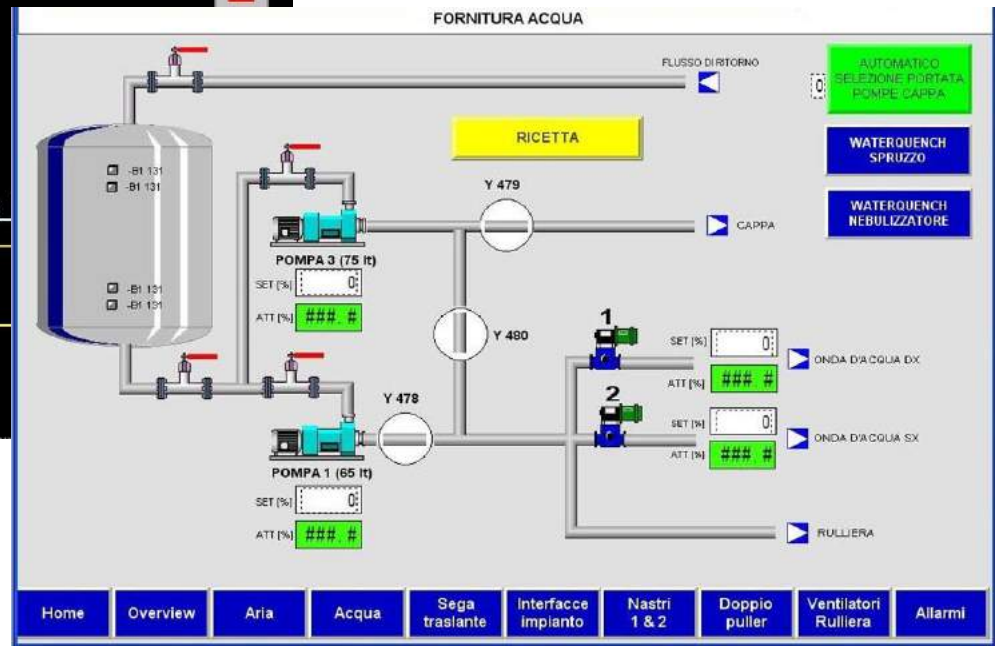
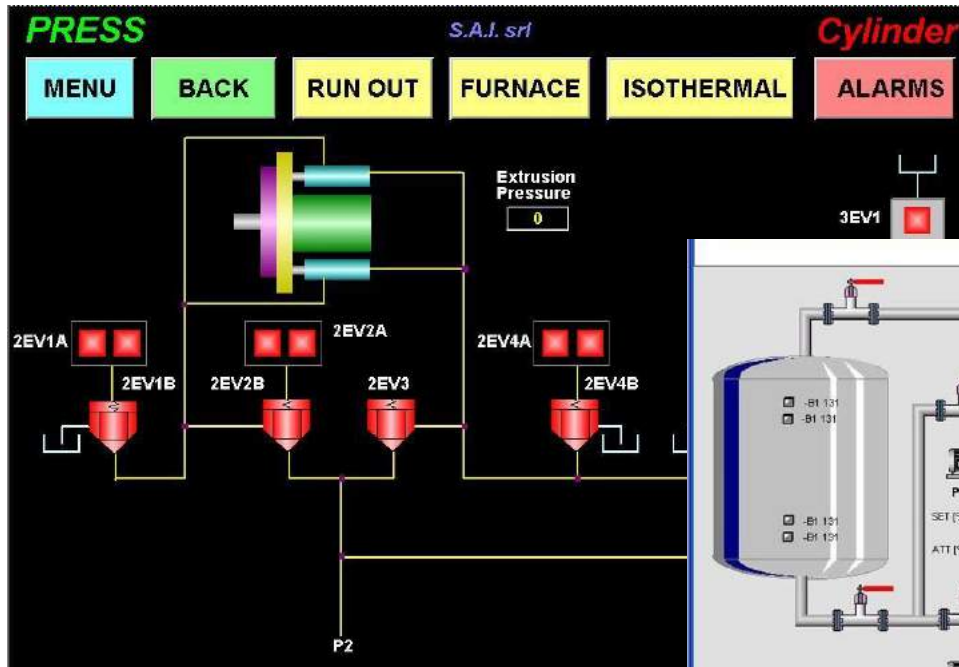
GRUPPO VENTOLE 10	GRUPPO VENTOLE 9	GRUPPO VENTOLE 8	GRUPPO VENTOLE 7	GRUPPO VENTOLE 6
OFF	OFF	OFF	OFF	OFF
ON	ON	ON	ON	ON
OFF	OFF	OFF	OFF	OFF

Home Overview Aria Acqua Sega traslante Interfacce impianto Nastri 1 & 2 Doppio puller Ventilatori Rulliera Allarmi

Controls



Hydraulic Circuit



Log Storage

